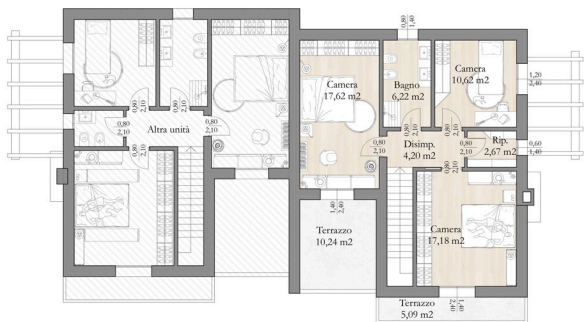
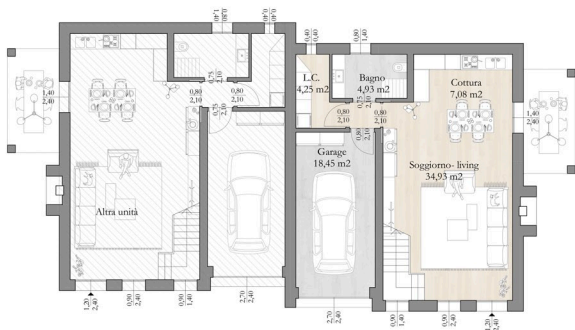


# BIFAMILIARE MAERNE



Pianta piano primo UNITA' IMMOBILIARE



Pianta piano terra UNITA' IMMOBILIARE

Soggiorno- living 34,93 m<sup>2</sup>  
 Cottura 7,08 m<sup>2</sup>  
 Camera 17,62 m<sup>2</sup>  
 Camera 17,18 m<sup>2</sup>

Camera 10,62 m<sup>2</sup>  
 Bagno 6,22 m<sup>2</sup>  
 Bagno 4,93 m<sup>2</sup>  
 Locale tecnico 4,25 m<sup>2</sup>

Garage 18,45 m<sup>2</sup>  
 Ripostiglio 2,67 m<sup>2</sup>  
 Disimpegno 1,21 - 4,20 m<sup>2</sup>

**UNITA' TOTALE: 129,99 m<sup>2</sup>**

**BIFAMILIARE MAERNE**  
**PLANIMETRIE**

0 1 2 4m

TRE.DI. srl